

Annual Review

Sutton CVS





Vision

Mission

**BE
BRAVE!**

**Promote equality
and diversity and
positive change for
communities in the
Borough of Sutton**

**To LEAD and Act as a
CATALYST in the
advancement of the
VCSE Sector as a
strategic partner and
deliverer of services
in Sutton**

BE BRAVE!

Bold
Empowering

Build
Relationships
Active
Voice
Enterprising

**“Boost Engagement
Build Resilience Advance
Voluntary (sector)
Excellence”**

Annual Review

Sutton CVS



Who are we



Board



Staff



Partners



Board

Chairperson:

Denise Crone (resigned November 2016)

Jenny Sims (since November 2016)

Vice-Chairman:

Neil Frater

Jeffrey Cashier

Paul Harper

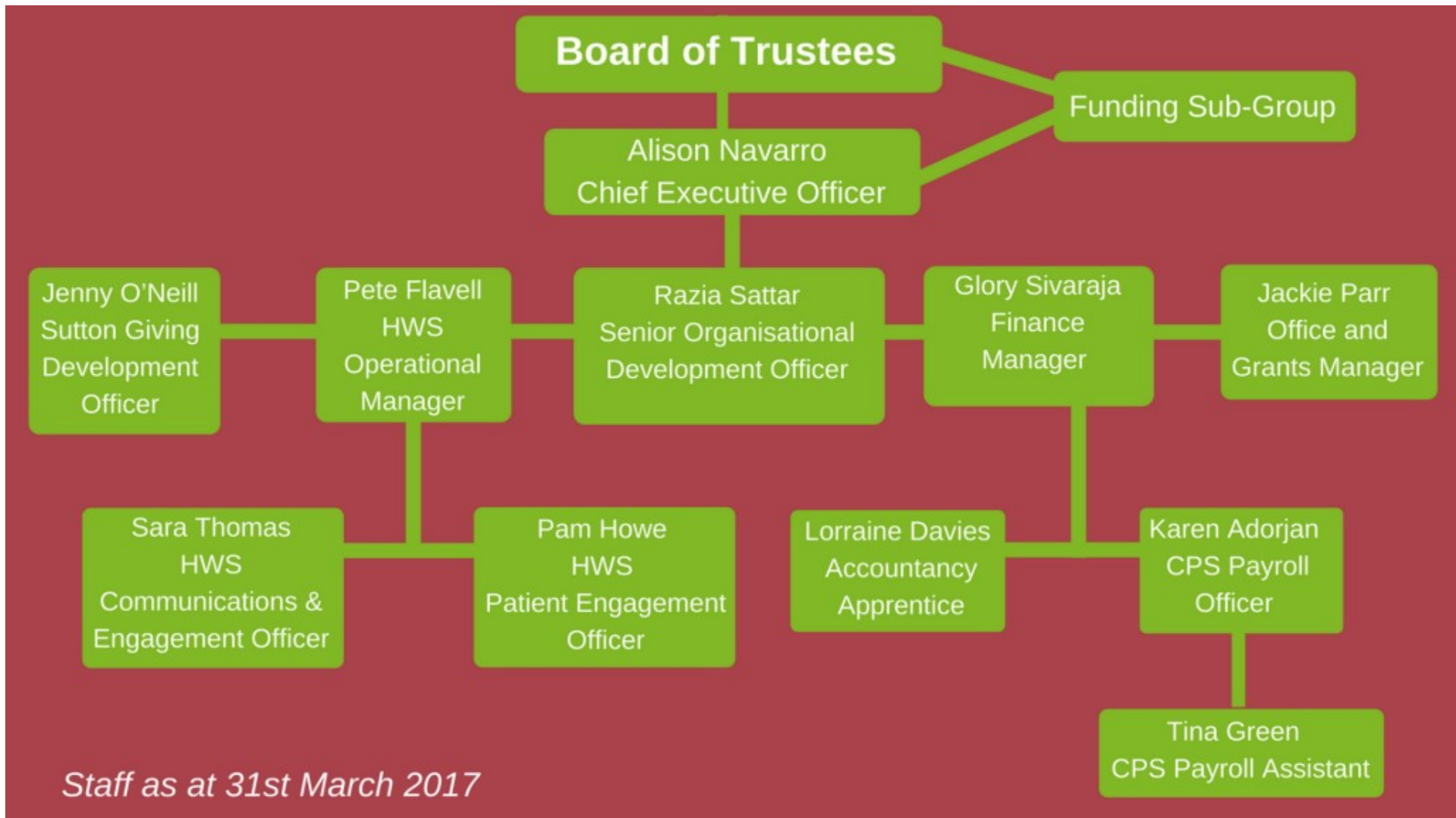
Nick Walsh

Beth Johnsson

Anne Jones

Elliott Colburn (since January 2017)

Nigel Steward (since January 2017)





Clinical Commissioning Group



Annual Review

Sutton CVS



What we have done







Supporting the Voluntary Sector

Our main area of work is providing development support to voluntary and community organisations covering every aspect of running a charity or small community group.







Getting to grips with good governance



Safeguarding for trustees training

4
**Training,
Events and
Workshops**



Safeguarding listening event



Equality and diversity

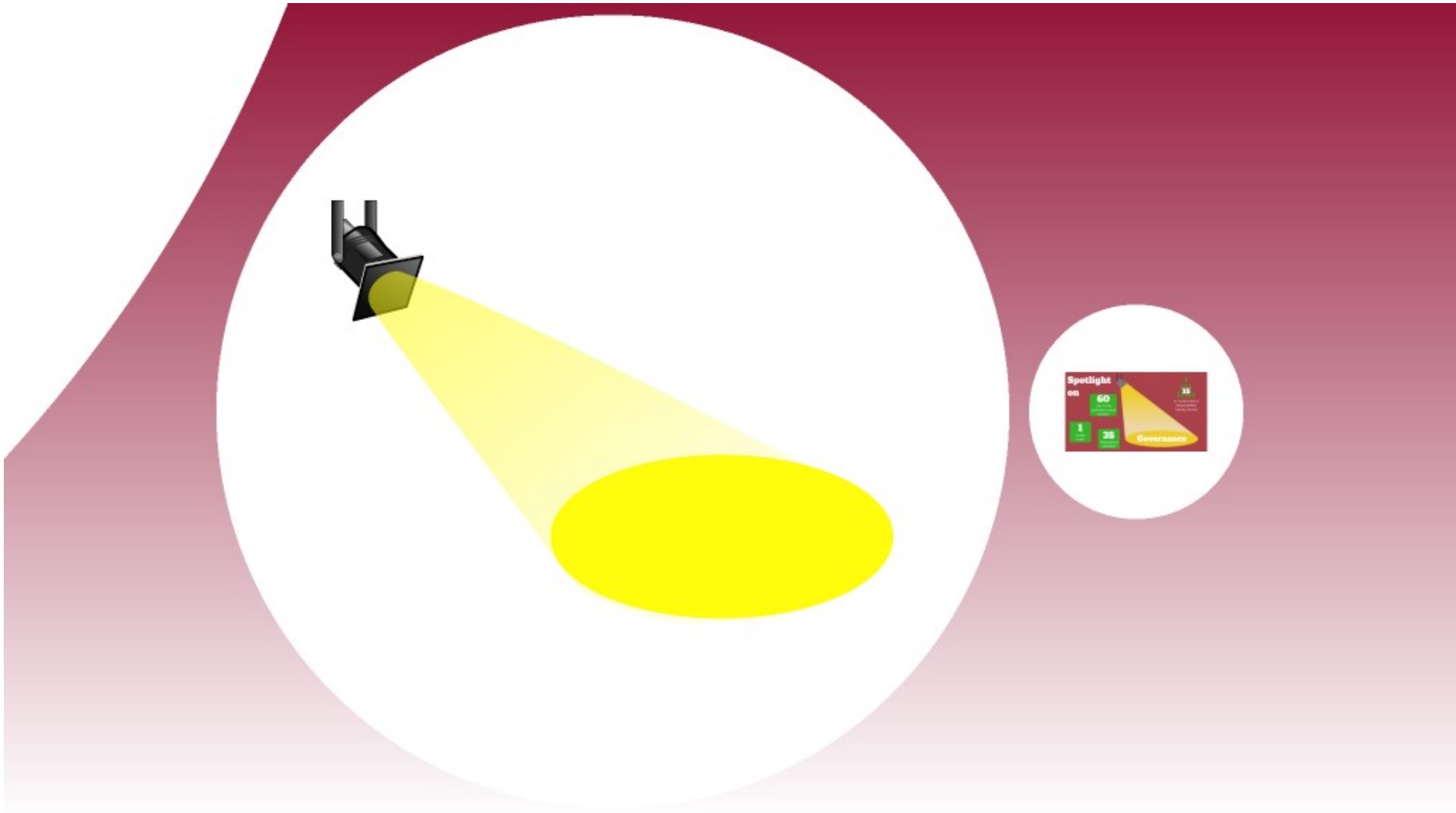
Safeguarding Listening Event

In January 2017 we hosted a safeguarding listening event which covered both adults and children's organisations.

This was an opportunity for safeguarding board members, both at the event and through follow up reports to both the SSAB and LSCB, to hear about the work of the voluntary and community sector in promoting safeguarding.

27
Organisations
attended





Spotlight

on

60

One-to-one
governance advice
sessions

1

Trustee
Event

35

Organisations
(attended)



2x Trustee Roles &
Responsibilities
Training Courses

Governance



A key part of our work is communication and keeping the voluntary and community sector up to date on legislation, policy and practice. One of the ways we do this is through regular e-bulletins, our website and targeted communications.

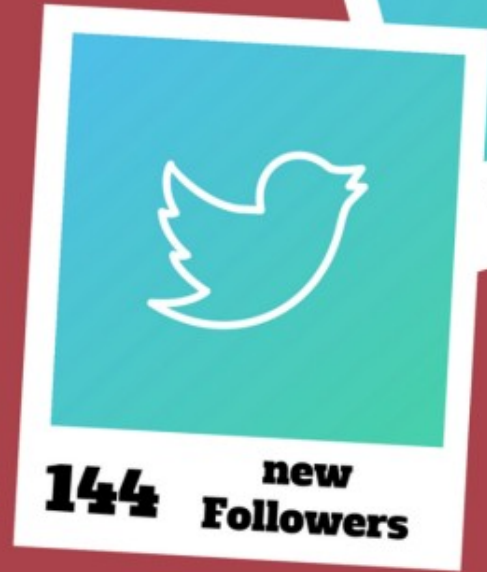
Communication



195 E-bulletins



5,244 unique Visitors



144 new Followers



30 new Likes



SCVS held an annual event during Trustee week with guest speakers covering the Trustees' roles in fundraising and commissioning.

This event also includes awarding the Sue Robson Trustee of the Year award.





For #GivingTuesday in 2016 SCVS staff took part in a pledge auction to raise money for a local voluntary organisation.

The local organisation was selected at random and was presented with a cheque for £140.



Representation and accountability



Forums and Networks is a key way in which we promote joint working and they provide an important opportunity for sharing information; receiving updates from the public and voluntary sector; and a chance for organisations to comment on and influence local strategies and policies



Networks and Forums

10

Forums held
throughout
the year

Health, Social Care & Wellbeing Network

Children & Young Peoples Forum

Voluntary Sector Forum

Small Groups Forum

BME Forum

176

Participants
attending
/benefitting

BME Forum

The BME forum concentrated on working towards the research on the Race Equality Score Card, as well as hearing about the Race Hate Crime activities in the borough.

The Race Equality Score Card should be launched in October 2017 and a programme of work will be developed through to 2018.

2

Forums held throughout the year

32

Participants attended



**We are a key contributor
to strategic
developments across the
borough on behalf of the
Voluntary and Community
sector sitting on many
key decision making
boards/forums.**



- Local Safeguarding Boards Sub groups – Quality Assurance, Policy and Practice and Learning and Development
 - Domestic Violence Strategic Board and Commissioning Board
 - Safer Sutton Young Peoples Partnership Board
 - Sutton Integration and Transformation Board
 - Local Safeguarding Children’s Board
 - Sutton Economic Support Taskforce
 - Sutton Safeguarding Adults Board
 - Early Help Perinatal sub group
 - Reducing Reoffending Board
 - Health and Wellbeing Board
 - Early Help Strategy Board
 - Domestic Violence Forum
 - Safer Sutton Partnership



1
Workshop

15
People attended the workshop

11
Voluntary Sector Organisations attended the workshop

100%
Workshop attendees were successful in funding

2
Funding rounds

45
Applications received

24
Successful applications

£103,336.21
Funded 2016-2017

2017 Junior Dragons Apprentice Challenge

Sutton



This initiative was a partnership between SCVS and Sutton Council.

The idea was to match four apprentices/young people from local businesses with schools to work on a business plan for making money to be donated to a local charity.





SUTTON GIVING

OUR PEOPLE, OUR PLACE, OUR SUPPORT



OUR PEOPLE,

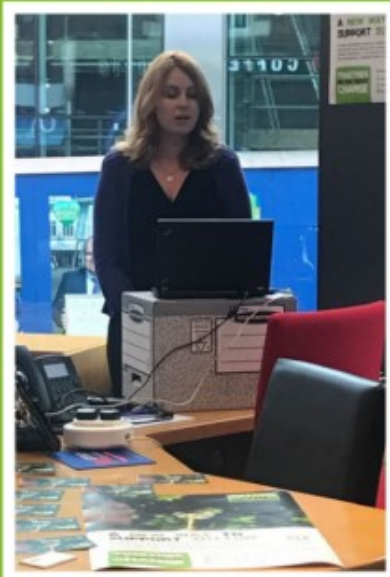
OUR PLACE,

OUR SUPPORT

Sutton Giving officially launched in February 2017. Harnessing the power of local to create a greater sense of community, Sutton Giving will shine a light on and tackle local issues with the aim of improving lives and strengthening our community.

Sutton Giving's initial focus is upon Children and Young People with an ambition to improve their mental health.

L
A
U
N
C
H



L
A
U
N
C
H

Sutton Giving is fundraising and actively encouraging people to donate their time and skills. Partnerships throughout the borough are being built to facilitate this and resources will be made available to voluntary sector organisations that can positively affect the mental health of Children and Young People.

For more information and the latest news visit www.suttongiving.org.uk

Sutton Giving. Our People. Our Place. Our Support.

healthwatch Sutton

The consumer champion for health and social care in the London Borough of Sutton.

Healthwatch Sutton also provides independent support to maintain, support and develop the Sutton Clinical Commissioning Group Patient Reference Group.

Highlights



Healthwatch Sutton Highlights



Lets Make Support Work for Everyone

Healthwatch Sutton held an event to look at the quality of support provided by Support Workers to people with learning difficulties.



Caring for People with Dementia

In 2016 'carers' and 'dementia' was highlighted as a high priority for local people, Healthwatch Sutton investigated

Healthwatch Sutton have made the following recommendations:

- The development of a Dementia Hub
- Improvement in early diagnosis
- Improved support for carers
- Raising more awareness of dementia
- Improving support for people with dementia



Inpatient Project

NOISE AT NIGHT - Just less than half of all patients surveyed said that they had been bothered by noise at night.

RECOMMENDATION - St Helier investigate effective ways of alleviating both noise and light during the night.

INSUFFICIENT NURSES - 1 in 10 patients said that they felt that there were not enough nurses on a weekday, rising to 1 in 5 patients at the weekend.

RECOMMENDATION - St Helier wards to look at any real/perceived deficit in nurse staffing levels.



Supporting Patient Engagement & Involvement

Representatives from over half of Sutton's Patient Participation Groups attended the second Patient Group forum. The theme was "Building Better Participation"



The Patient Reference Group brings together volunteer patient representatives from Sutton's PPGs to provide patient input into the provision and monitoring of locally commissioned healthcare services





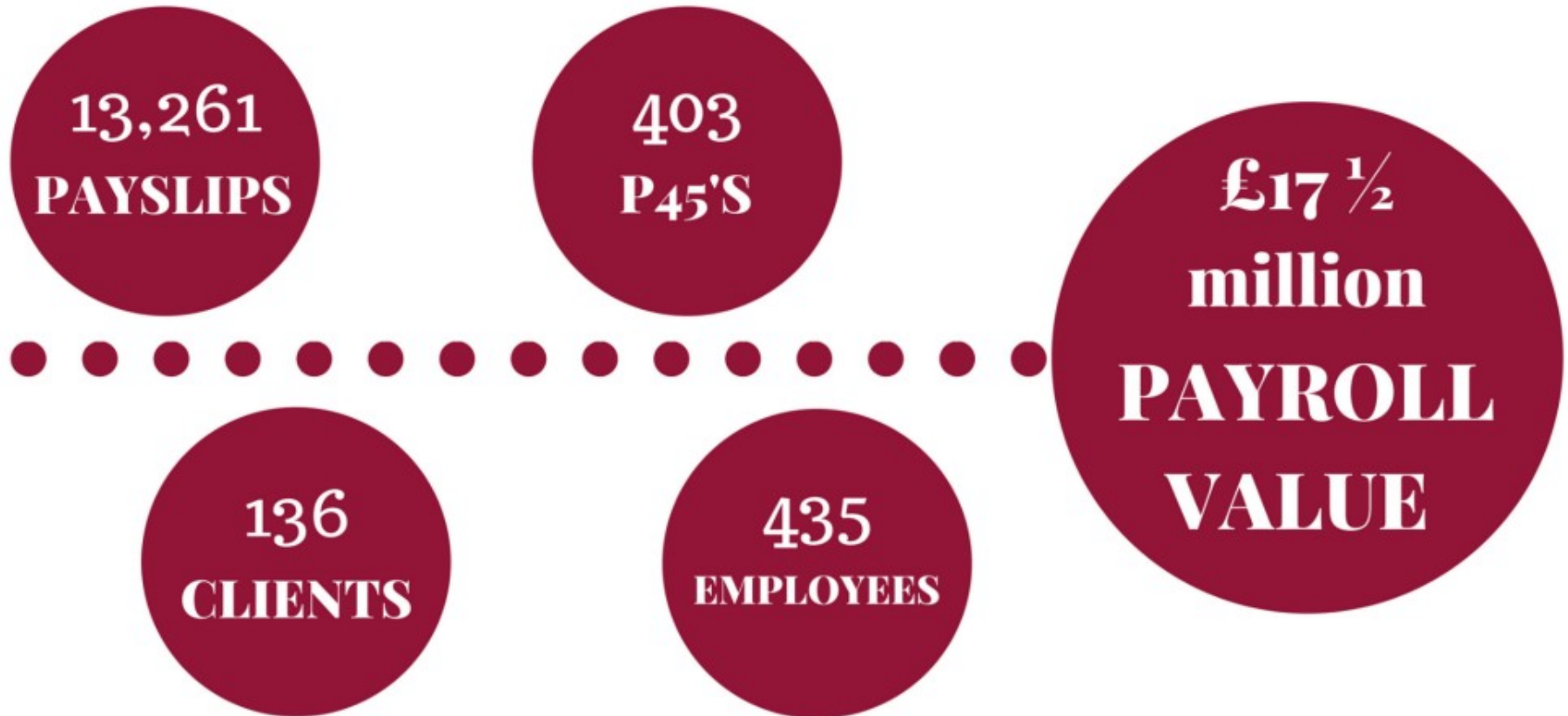
CPS Payroll

**The trading arm of the
Charity, CPS Ltd provides
bespoke payroll services to
voluntary organisations in
Sutton and beyond.**





CPS Payroll



Annual Review

Sutton CVS



**Where we
are going**



A new look for 2018!



**Community
Action
Sutton**

**A new
Strapline ...**

**A new
logo ...**

A new name...

From 2018 Sutton Centre for
the Voluntary Sector (SCVS)
will change its name to ...

**Community Action
Sutton**

A new Strapline ...

Building Stronger Communities

A new logo ...

Coming soon ...

Watch this space

Strategic





SCVS has been instrumental in setting up a Fairness Commission in Sutton that is focusing on what children and young people need to have in place at age 13 to enable them to have positive ongoing life chances.

SUTTON
2031 
PLANNING FOR OUR FUTURE

SCVS has been key in supporting key partnership initiatives with the most important being The Sutton Plan. This is a Sutton wide partnership plan that is focused on Our Place – Our People – Our Plan. SCVS has been an active partner in helping to shape the plan and supporting the engagement of the voluntary and community sector.



The Sutton Local Transformation Board has been established to ensure the delivery of high quality care integrated around the needs of the residents and delivered in the right place, at the right time to achieve the best outcomes for patients.

The Boards work programme also reflect the ambitions of the SW London STP and the voluntary sector has a place on the board along with those who deliver health and social care services in Sutton.

The Domestic Violence Transformation Board is responsible for designing an evidence based programme that seeks to transform the prevention of DV in Sutton and ensuring effective support for those people who have experienced DV.

The voluntary sector has a seat on the DVTB as the voice of the voluntary sector is important in ensuring that the needs of those experiencing domestic violence, including children, are heard and understood as well as designing services and solutions that utilise the innovation, experience and flexibility of the voluntary sector

Supporting the sector



**BME &
Faith**

**Community
Development**

Representation

BME & Faith

A key priority for 2017/2018 will be to connect with the BME and Faith Groups in the area, as well as very locally based community groups to better understand what they need to enable them to support local communities.

We will work with them to meet their needs in ways that are accessible, proportionate and timely.

Community Development

2017/18 has been an exciting time for Community Development with the emergence of a group of local practitioners who are keen for the voices of local communities, as those leading the changes within their local areas, to have their voices heard and to influence the service development and delivery of local and Sutton wide voluntary and public sector organisations.

Representation

The voluntary sector in Sutton is a key partner in driving forward change with strategic partners. At the boards and partnership that make strategic, policy and commissioning the voice of local people and/or the voluntary sector is present.

As we move to 2017/18 work will take place to ensure that the best people are in the right place at the right time.

Annual Review

Sutton CVS



**We look forward to
working with you
all in 2017-2018**



Annual Review

Sutton CVS

